

**YMCA of South Dade**  
Miami-Dade, Florida

Client:  
YMCA of Greater Miami

Total Cost:  
\$5,500,000



**Nature of Work:**

The YMCA of South Dade replaces a cramped 9,000 square foot facility on a five acre site in upscale suburban Miami-Dade County. The site is bounded on the west by a handsome municipal golf course, on the north and east by single-story semi-detached townhouses, and the south by a major divided street. Parking for nearly 300 cars will be accommodated on the site as well as extensive landscaping buffer to the neighborhood.

The proposed two-story building is approximately 35,000 square feet. The two-court gymnasium, two meeting rooms, offices, child care center,

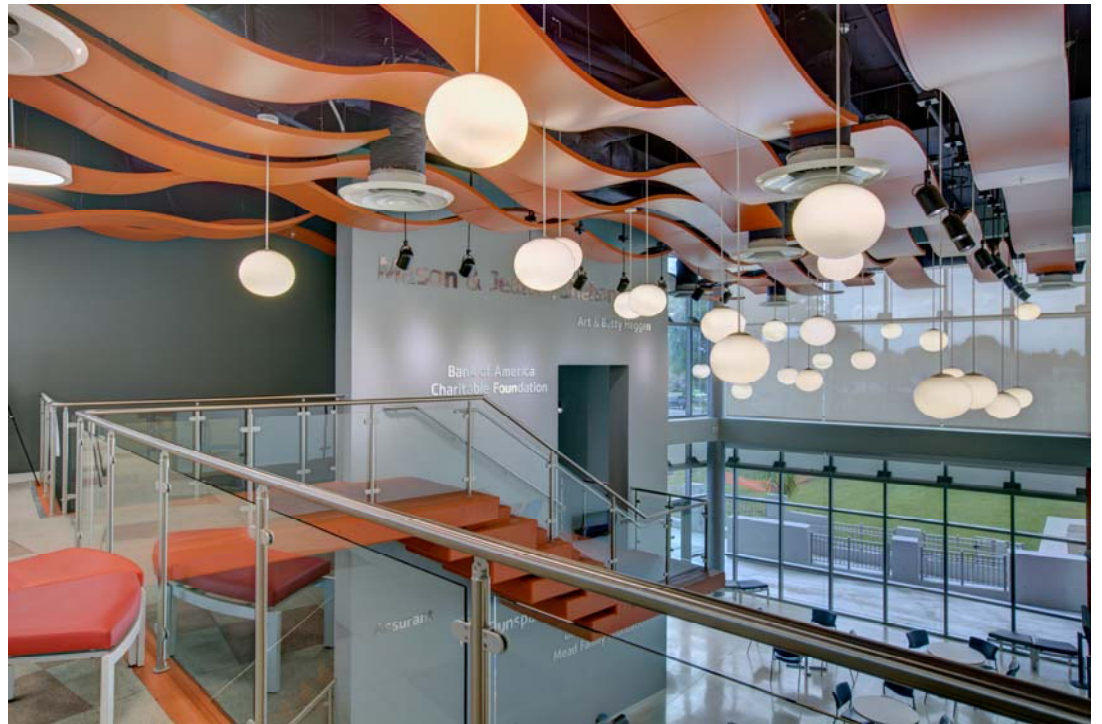
lockers, fitness studios and fitness center will support a wide range of recreational and social activities common at YMCA facilities around the country. A recreational pool with generous deck will be enveloped on three sides by the building, which features large glazed areas onto the deck. There will be excellent vistas to the adjacent golf course from the upper floor fitness facilities and from the pool deck.

Distinctly contemporary in appearance the Y will provide a sweeping façade along the street with extensive glazed walls on the second floor fitness center, acting as a beacon to the facility.

The other facilities—gym, meeting rooms, offices, child care center and locker rooms will be housed on the main floor for easy access and excellent supervision.

Plans have been developed for expansion of the building to over 60,000 square feet for implementation over a fifteen year period. Additional gym space, child care facilities and fitness studios will be provided in the two phase expansion. A three deck parking garage is also being considered should the need present itself.

YMCA of South Dade  
Miami-Dade, Florida



YMCA of South Dade  
Miami-Dade, Florida



**BORRELLI + PARTNERS**  
ARCHITECTURE PLANNING LANDSCAPE INTERIORS

